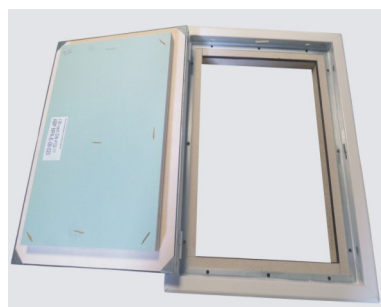
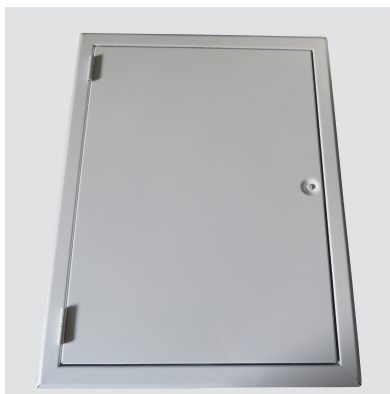


Heika-Flame Solid

pour cloisons et gaines techniques



Numéro d'article	Cotes de montage en mm	Cotes hors-tout cadre en mm	Ouverture jour en mm
SD200200SW/MW-90	200 x 200	255 x 255	125 x 125
SD300300SW/MW-90	300 x 300	355 x 355	225 x 225
SD400400SW/MW-90	400 x 400	455 x 455	325 x 325
SD400600SW/MW-90	400 x 600	455 x 655	325 x 525
SD500500SW/MW-90	500 x 500	555 x 555	425 x 425
SD600600SW/MW-90	600 x 600	655 x 655	525 x 525
SD600800SW/MW-90	600 x 800	655 x 855	525 x 725
SD6001000SW/MW-90	600 x 1000	655 x 1055	525 x 925
SD6001200SW/MW-90	600 x 1200	655 x 1255	525 x 1125